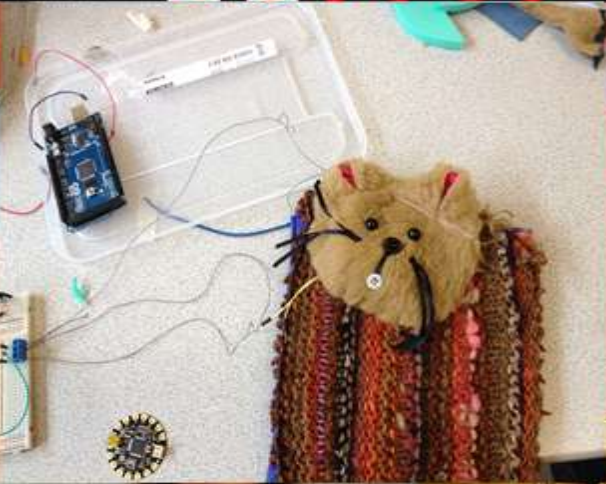
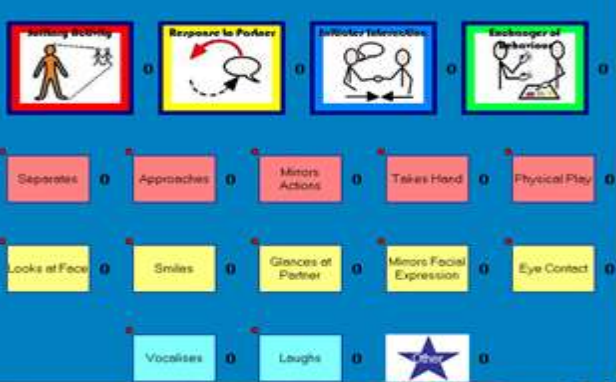


# **6th International Carers Conference**

**Care and caring: future proofing the new demographics**

# Layout of presentation

- Introduction
- Background
- Recent projects
- Breaking Bread project
- Outcomes
- Future Plans
- Questions and feedback welcome!



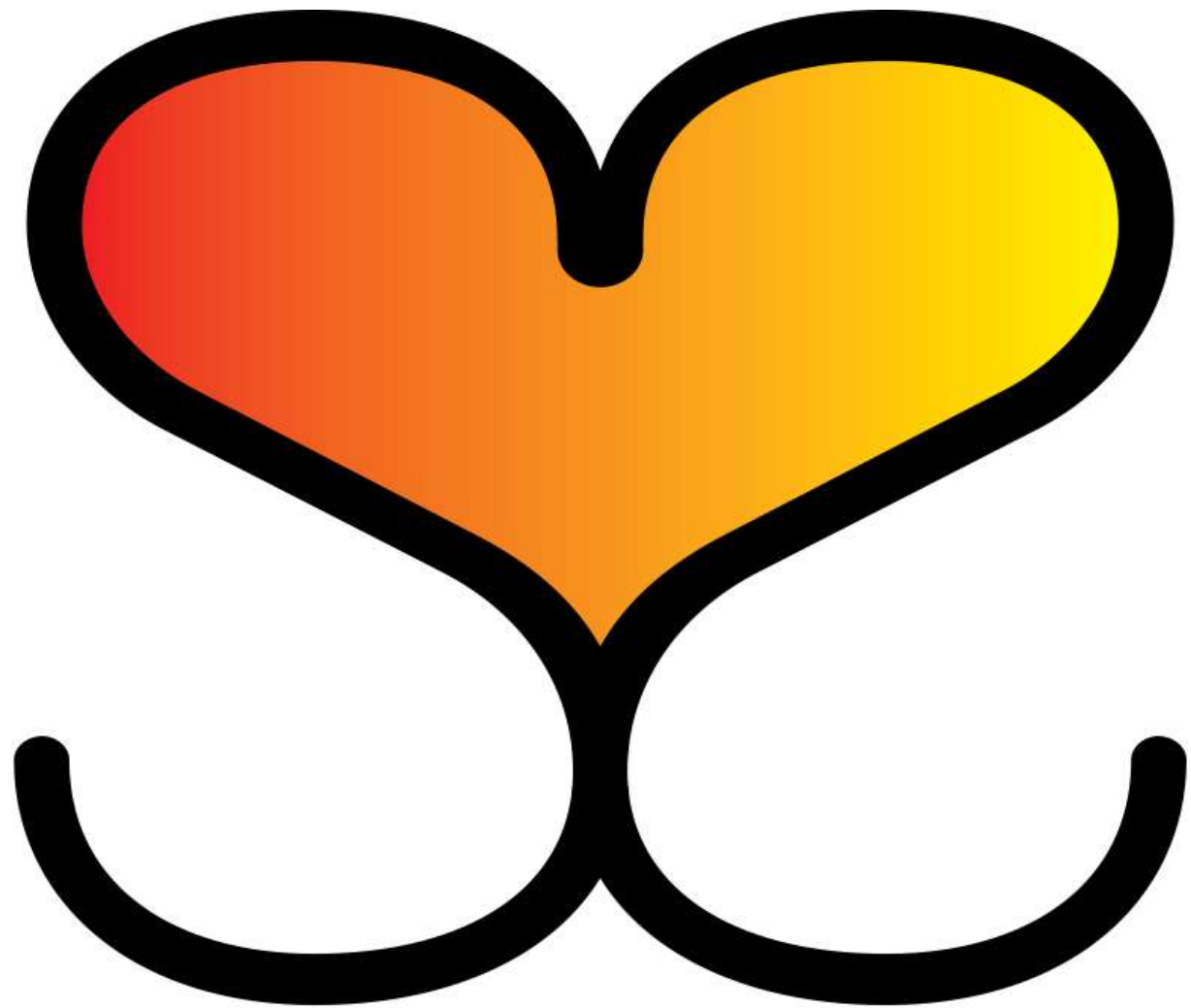
## We are

- A group of experienced researchers, designers and artists developing creative interventions to address various social need, and designing new ways to capture and evaluate the research process and results

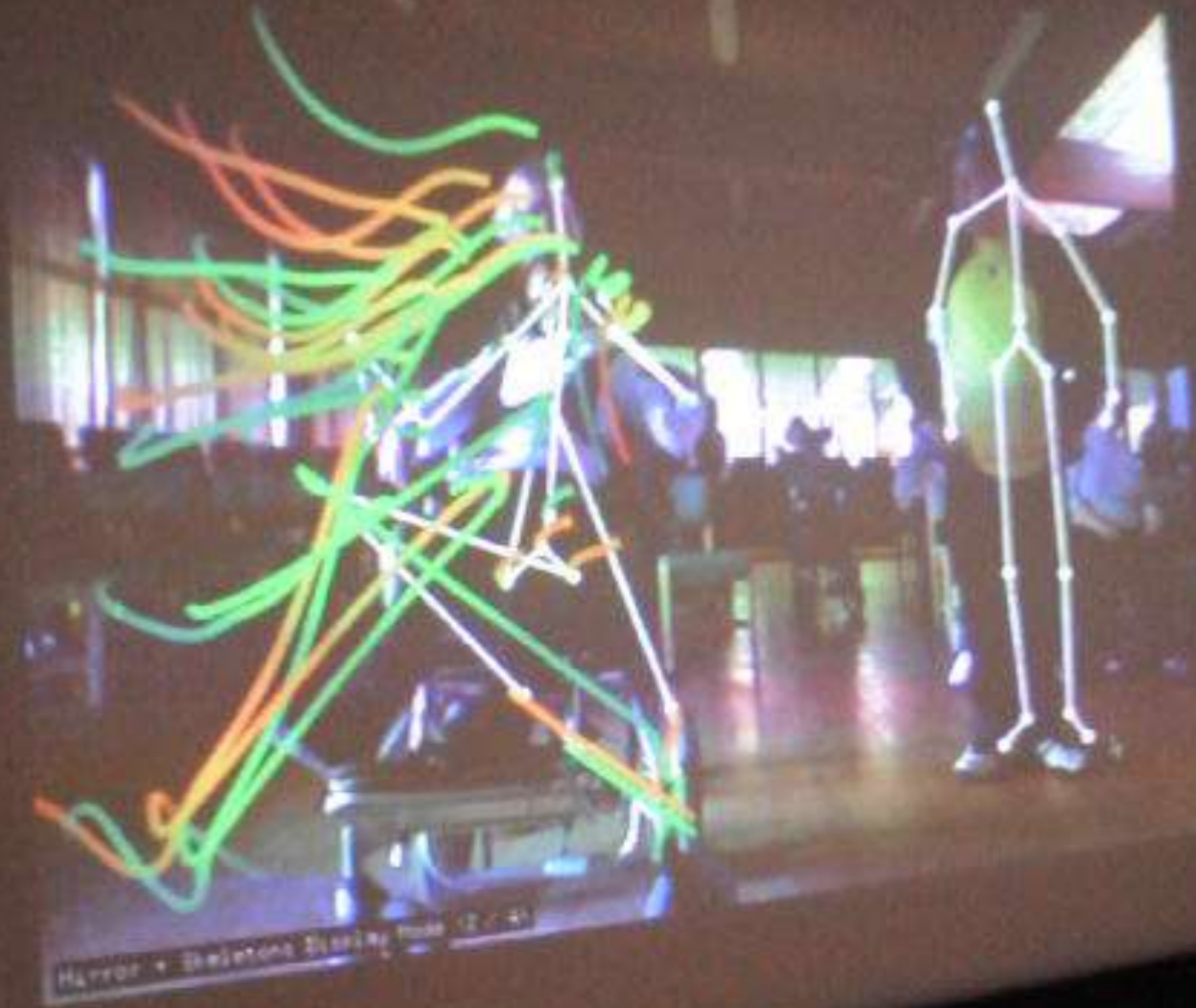
## We aim

- To be Wales' premiere inclusive arts hub, by bringing together the best parts of academia, enterprise and artistic endeavour to showcase the ways the arts can make a real difference to peoples lives.

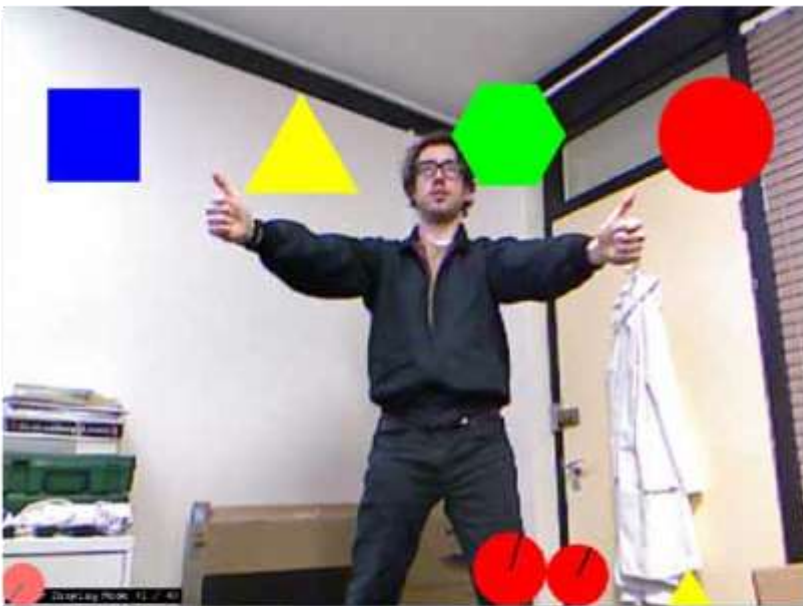




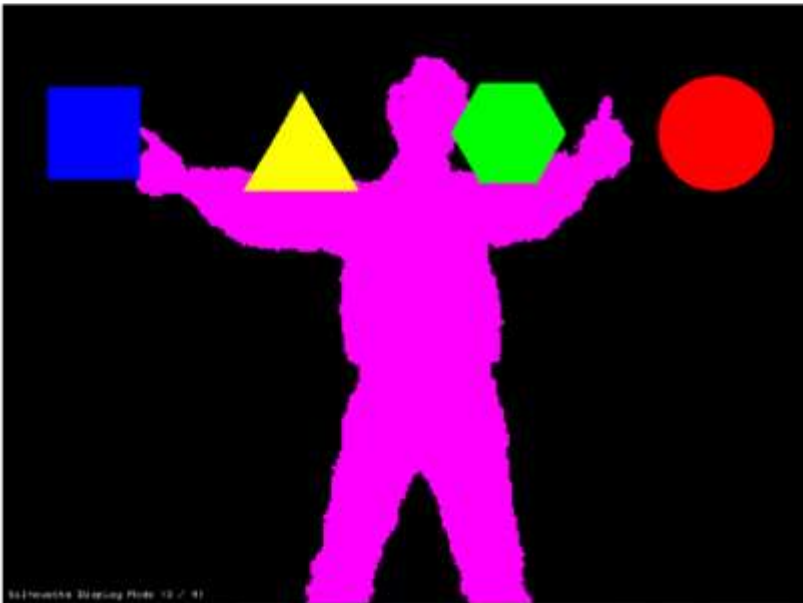
SOMABILITY



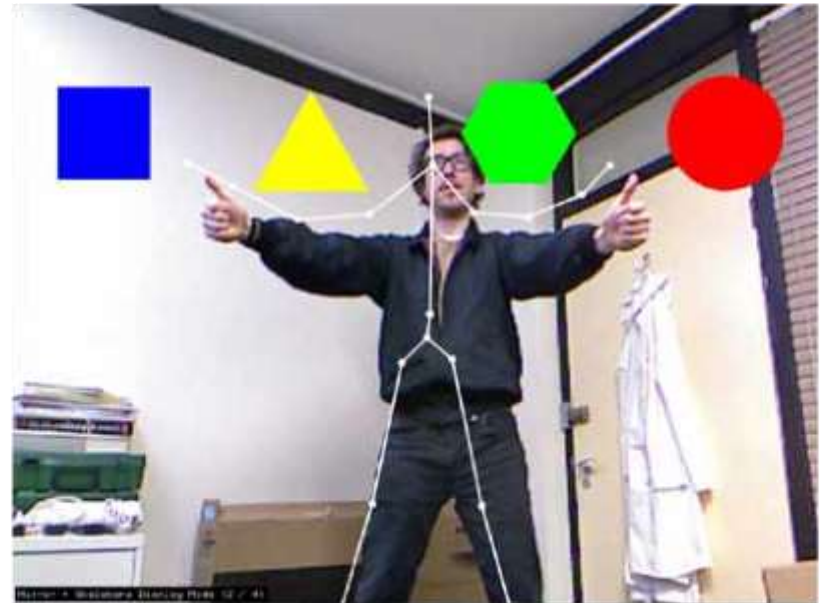
FUNDED BY, RAYNE FOUNDATION, RHONNDA  
CYNON TAF, CARDIFF MET



Mirror



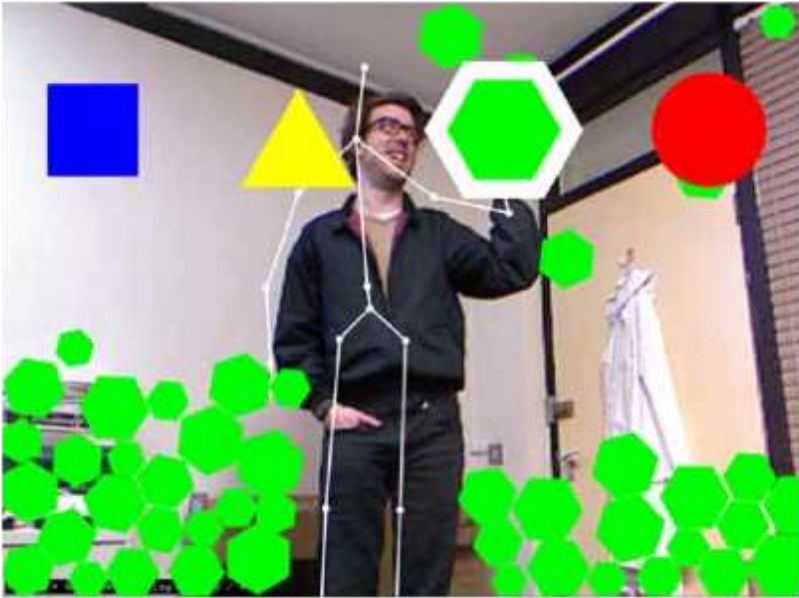
Silhouette



Skeleton







REACH



FLOW



BALANCE



# ProFoundCoding

Video analysis for special needs schools

FUNDED BY, CREATIVE EXCHANGE WALES  
NETWORK, CARDIFF MET



Separates

Approaches

Mirrors Actions

Takes Hand

Physical Play

Looks at Face

Smiles

Glances at Partner

Mirrors Facial Expression

Eye Contact

Vocalises

Laughs

Other



FUNDED BY, ARTWORKS, Developing Research and Evaluation in Participatory Arts Settings



### THINK ALOUD

LEARN LOOK **ASK** TRY

**THINK ALOUD**

**HOW:** Give people a probe, object, image and ask them to 'think aloud' describe what happened, what it meant to them.

**WHY:** Opens up discussion encourages narrative rather than narrow questioning



### CROSS-CULTURAL COMPARISON

LEARN LOOK **ASK** TRY

**CROSS-CULTURAL COMPARISON**

**HOW:** Gather stories to reveal differences in response, behaviour, outputs, artefacts, between groups

**WHY:** Understand cultural factors and implications for future work



### SIMPLE ETHNOGRAPHY

LEARN LOOK **ASK** TRY

**SIMPLE ETHNOGRAPHY**

**HOW:** Spend as much time as possible with people to gain insights

**WHY:** Understand natural language, needs, day to day activity, object use, establish trust.

**Art Works** | Developing Practice in Participatory Settings

# Evaluation and Research Method Cards



DIGITAL  
STORYTELLING

1



2



VOICE  
MEMOS

3



4



EMPATHY  
TOOLS

5



6



BODY  
STORMING

7



8



INFORMANCE

9



10



PAPER  
PROTOTYPE

11



12



NEW  
HEADLINES

13



14



SCALE  
MODEL

15



16



STORYBOARD

17



18

**Art Works** | Developing Practice in Participatory Settings



 Creative  
 Exchange  
 Wales  
 Network

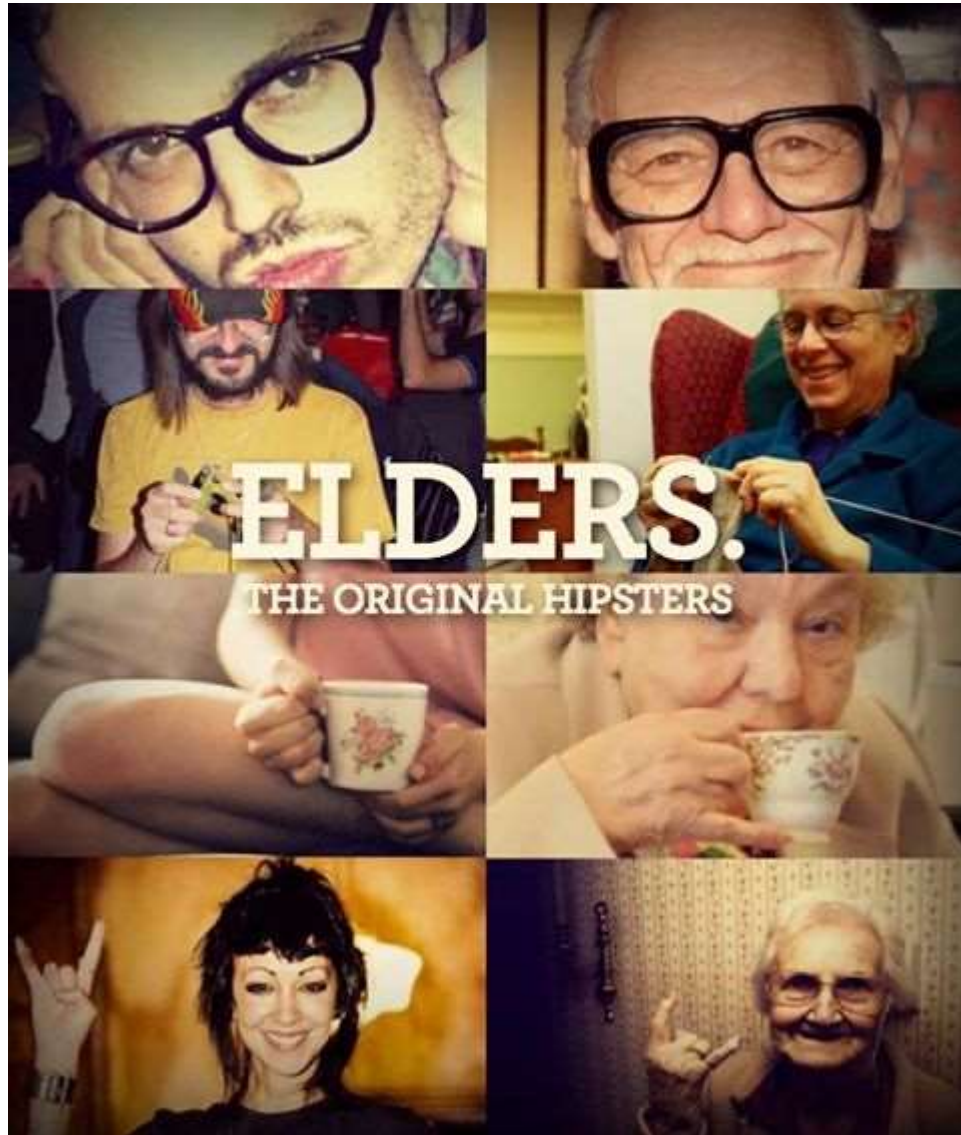






DESIGN INSPIRATION





TODAY at the Amazings!  
TRY something OLD  
LEARN something NEW



# CASSEROLE SO FAR...



Autumn 2011  
Awarded fund-  
ing from Design  
Council and TSB



Late autumn 2011  
Began research  
and engagement  
in Redhill



December 2011  
1st Casserole  
pilot in Redhill



May 2012  
Beta site launched



Feb 2012  
Decide to relaunch  
pilot in Reigate and  
Banstead



1st Pair:  
Katie and Betty



July 2012  
Site reaches 100  
sign ups



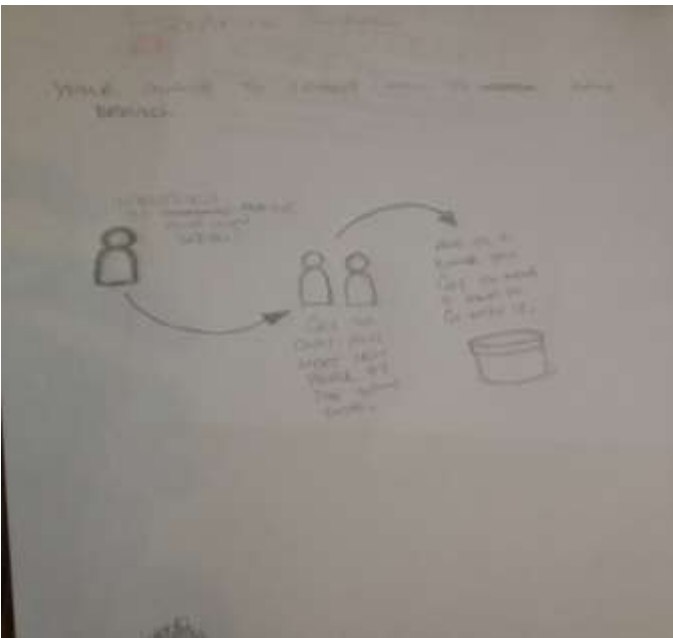
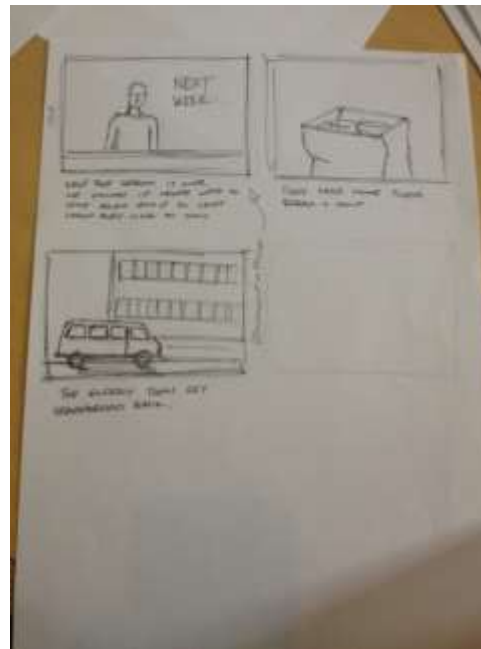
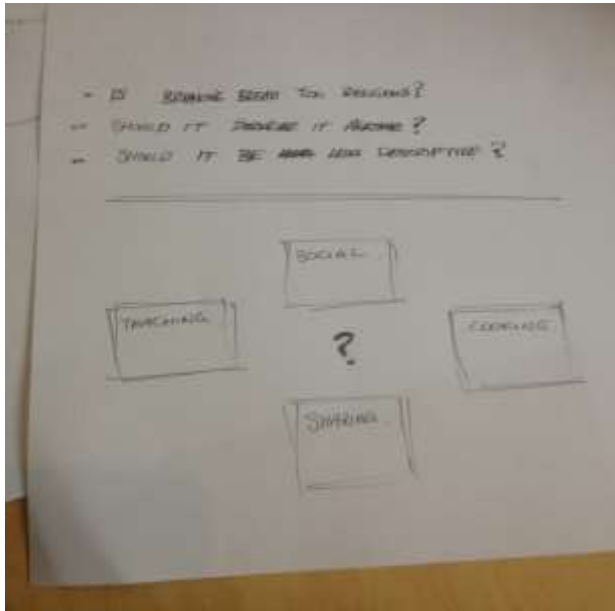
July 2012  
1st Casserole  
Member Meet Up  
Indian Cooking Class



# casserole

CASSEROLECLUB.COM







charities, local businesses, universities, SME's and social enterprises, local church groups, day care centres social clubs: AgeCymru, University of the Third Age, British Red Cross, Cardiff University Ageing Science and Older People research group, Cardiff 50plus group, Cardiff Council, Welsh Government, Welsh Local Government Association, Chapter Arts House, Cardiff Allotments, Cardiff Library, Cardiff Voluntary and Community Services, STAR, Communities First, The Sprout, Cardiff Youth Council, Safer Wales, SOVA, Trinity Project Cardiff, Space4u and Real Bread Campaign. Heath Evangelical Church, Church of St Michael and All Angels, Adamstown Day Centre, Fairwater Day Centre, Gabalfa Avenue Day Centre, Highfields Centre, Ty Canna Day Services, Knit and Knatter group and The Great Roath bake Off, Cant A Mill Vintage; One Mile Bakery; Hummingbird Bakery; The Freedom Bakery; Riverside Sourdough; Milgi's; The Pocket Bakery; Pen y Lan Pantry and Geraint Bakes Bread.















communities first **cymunedau yn gyntaf**



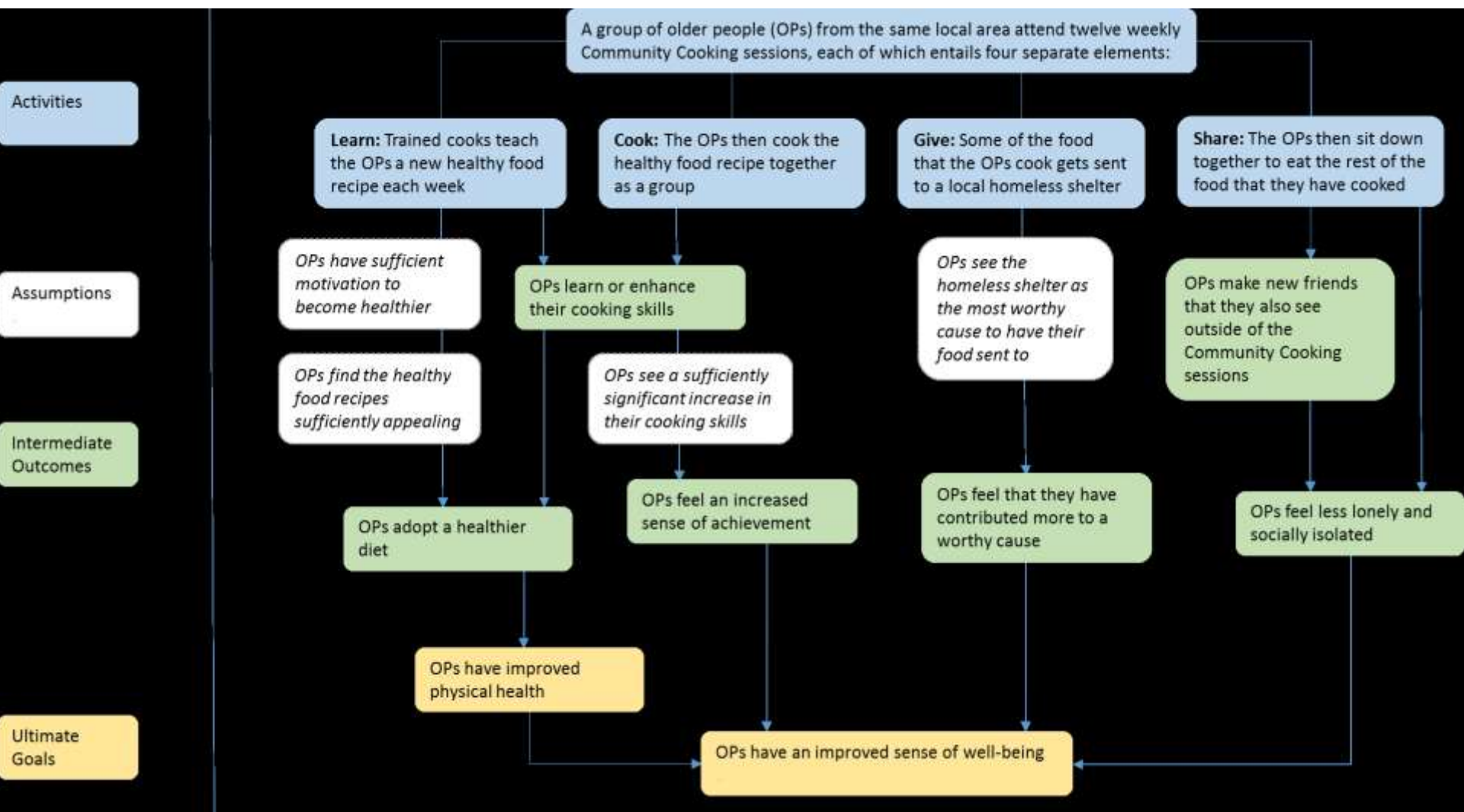






The sensorial object  
And journal of Food and Design





NESTA example, 'Standards of Evidence'



**Thank you**  
**Diolch yn fawr iawn**



**care and caring:**  
future proofing the new  
demographics



## CONTACT

- [leahmclaughlin@Hotmail.com](mailto:leahmclaughlin@Hotmail.com)
- [www.breaking4bread.com](http://www.breaking4bread.com)
- [toastybread@gmail.com](mailto:toastybread@gmail.com)

@Breaking4bread 