

6th International Carers Conference

Care and caring: future proofing the new demographics

Gothenburg, September 2015

TECHNOLOGY-ENABLED CARE AND SUPPORT

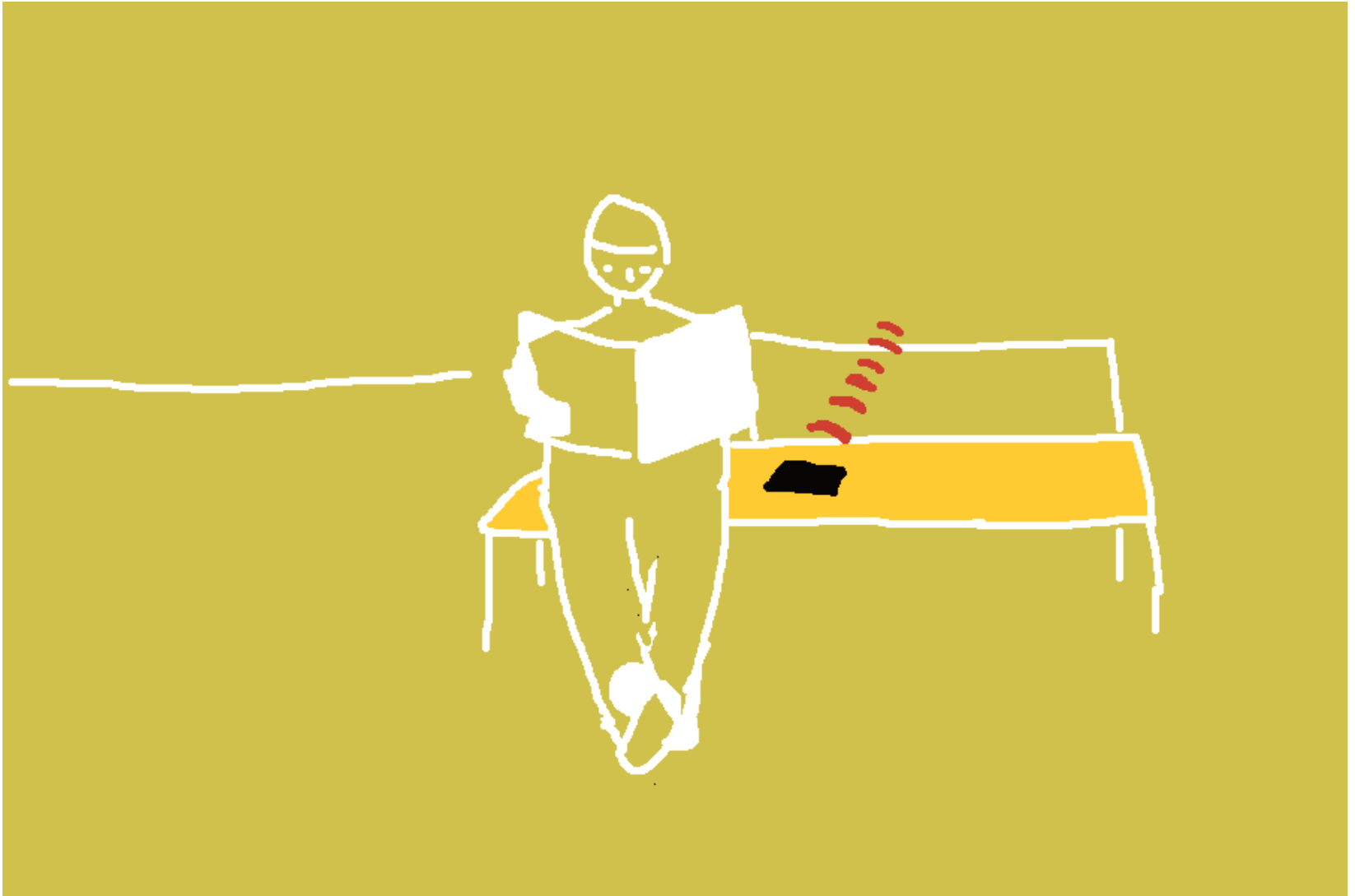


Making carers life easier

Martha Mackay

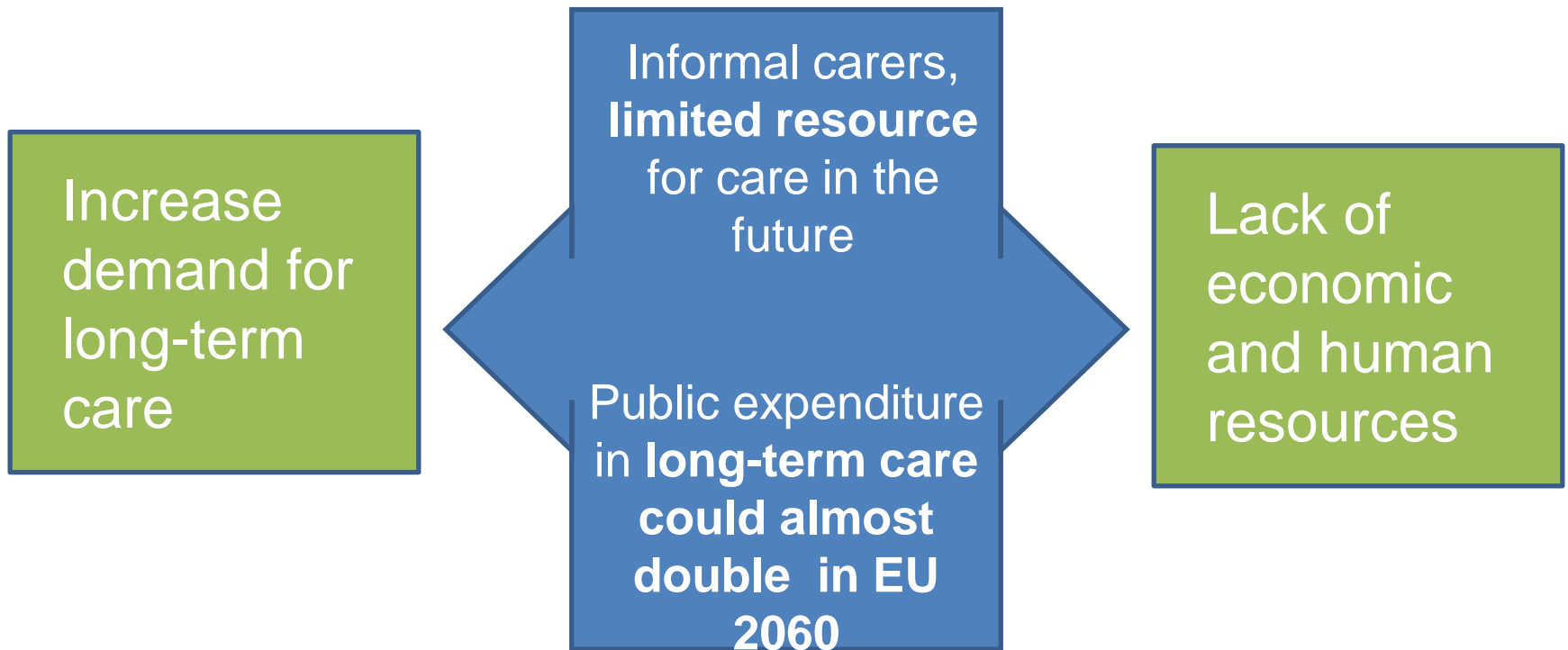


CARERS RESPITE



The general concern

GAP BETWEEN DEMAND AND SUPPLY



Impact on carers



higher proportion of people will have to rely on:

INFORMAL CARERS

CARE SERVICES



increased pressure on carers

Physical and emotion stress Health problems Isolation Burnout

Goal to achieve (1)

Making carers life easier



TIME OFF

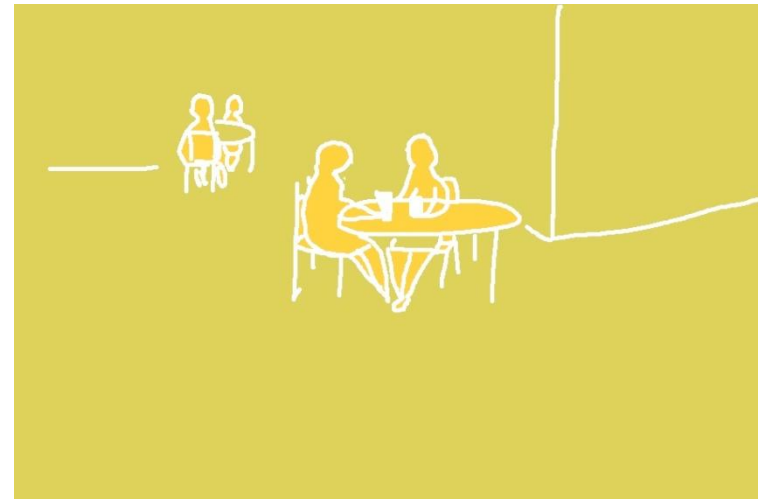
tranquillity

independence

stress - free



Instrumental duties



social life

leisure

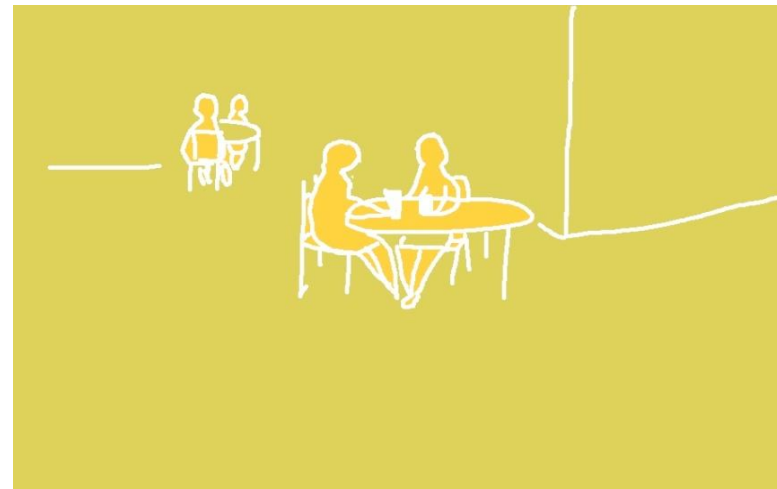
Goal to achieve (2)



times of low risk



take time off



What is our contribution?



**An ambient monitoring and
intelligent visual warning system**

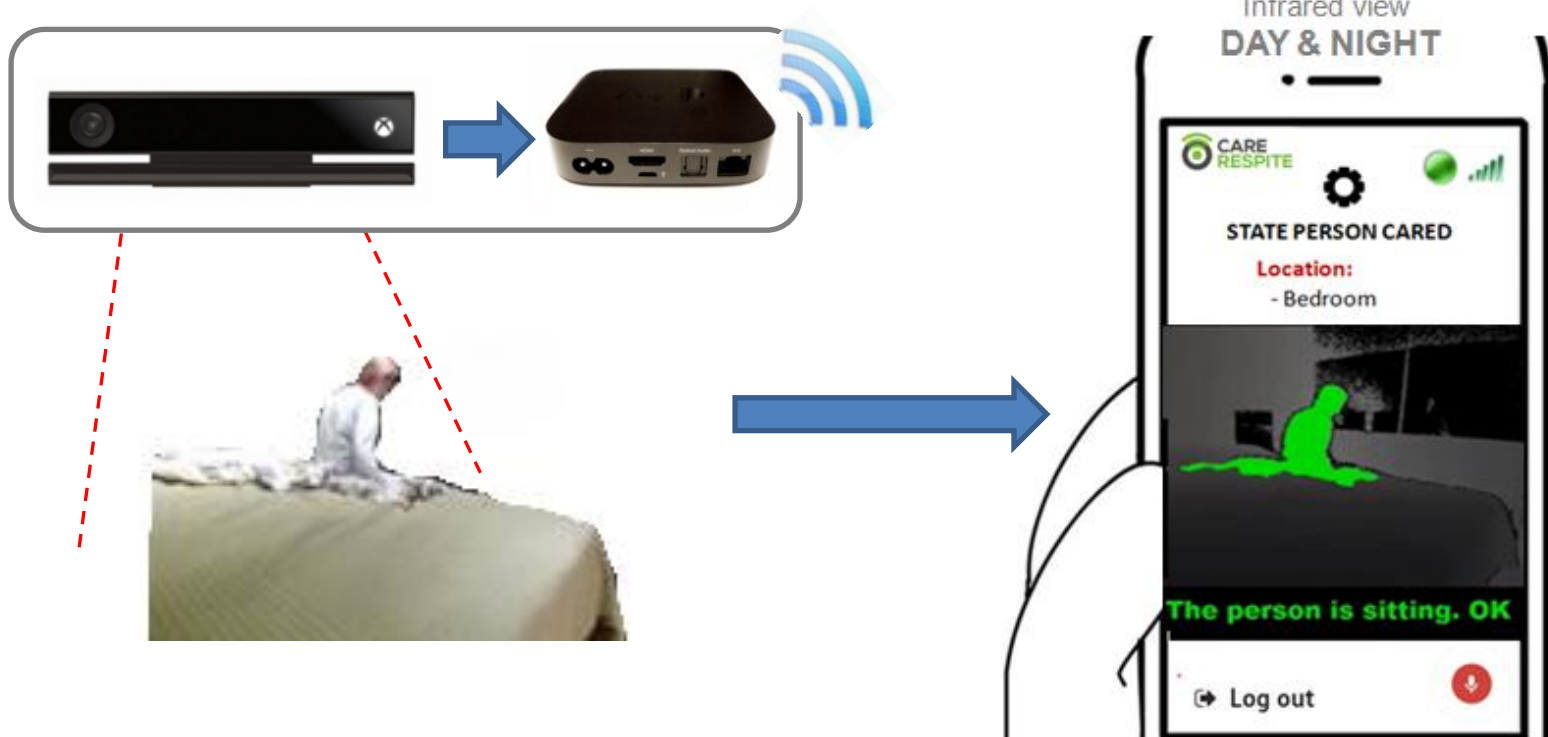
CARE RESPITE SYSTEM

AMBIENT INTELLIGENT DEVICE:

- Kinect camera + CPU
- Computer vision software



REMOTE RECEIVER (live streaming)





Computer assisted vision



live viewing



Intelligent visual warning system



CARE RESPITE: Intelligent vision sample

How does it work ? (1)

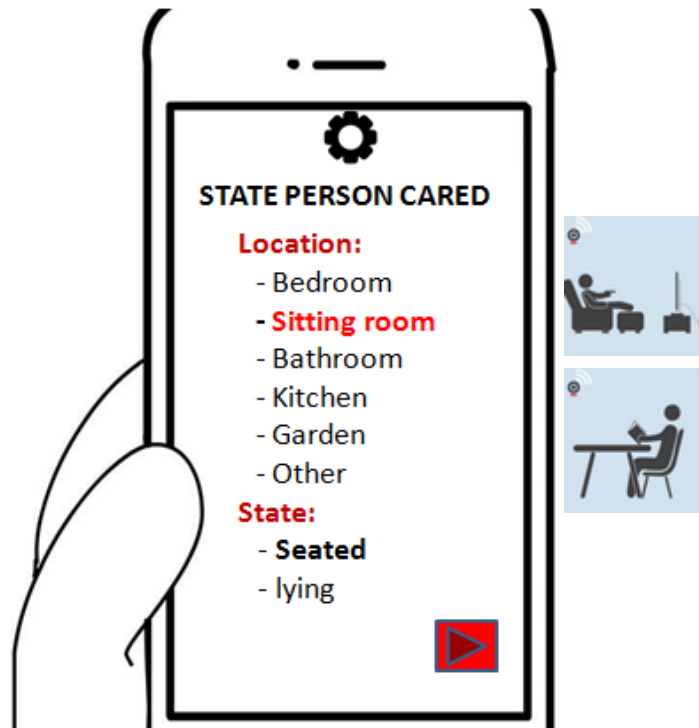
⇒ Install the camera at the **TIME** and **PLACE** that you consider.



How does it work ? (2)

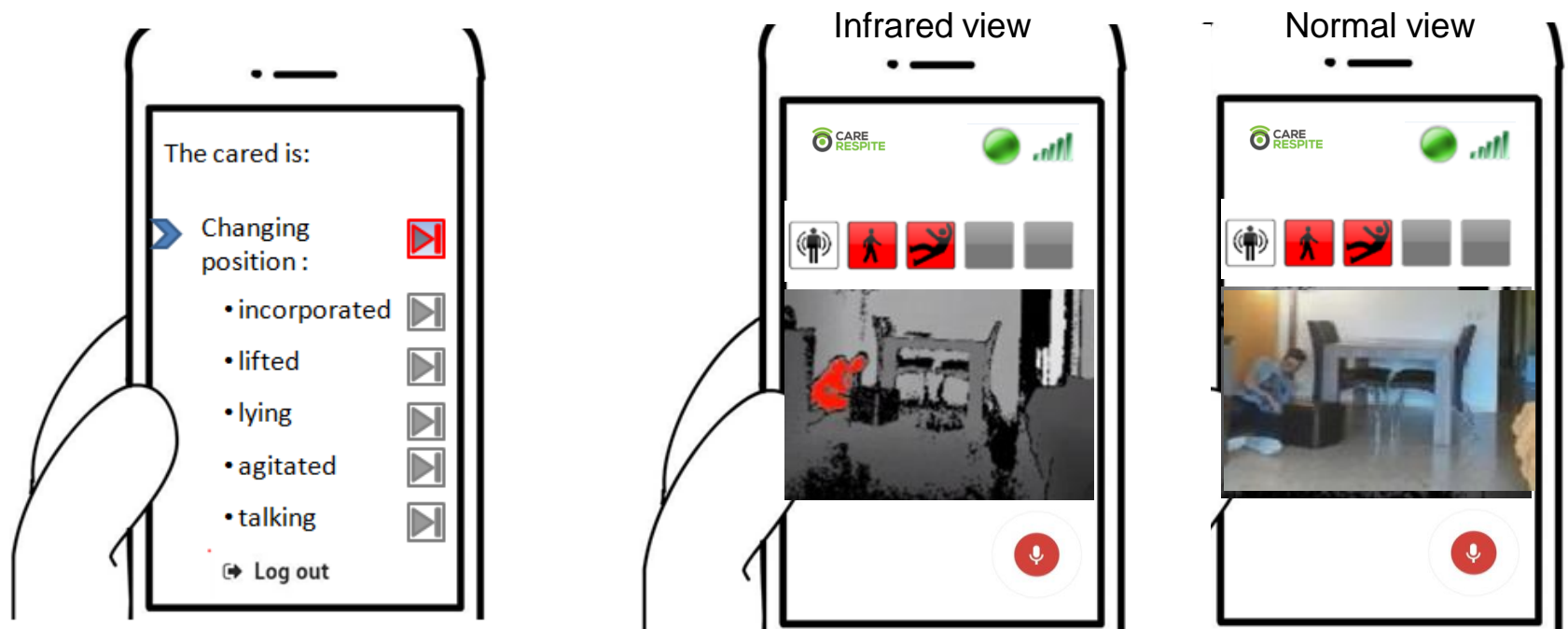
THE APP

⇒ **SELECT ALERT OPTIONS** in your mobile device in which you want to receive alert



How does it work ? (3)

⇒ **RECEIVE ALERT NOTIFICATIONS** on your device when the camera detects a change of position; whether by **DAY** or by **NIGHT**.



⇒ **VIEW** and **VERIFY** the reason of the incident.

⇒ **CONTACT DIRECTLY** with the option of **BIDIRECTIONAL VOICE**.

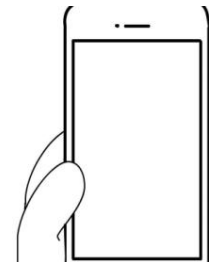
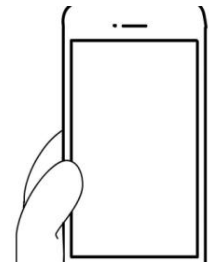
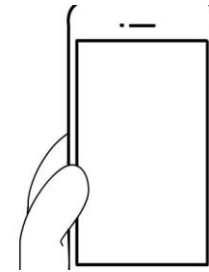
How does it work ? (4)



UNIT 1



UNIT 2



APPLICATIONS

- ➔ Private households
- ➔ Nursing homes and other elderly residential facilities
- ➔ Hospital and health centers
- ➔ Local and Regional Care services

BENEFITS

- Intelligent Monitoring
- Non invasive
- Customizable
- Scalable
- User friendly
- No ethical/environmental conflicts

SOCIAL IMPACT

- + Ageing in place
- + Delay of institutional care
- + Work-family balance
- + Carers and cared empowerment
- + Easier hospital discharge
- + New possibilities for tele-assistance
- + Reduction of gap demand-supply
- + Reduction of social expense

Contribution to a more sustainable care system

LEVEL OF DEVELOPMENT

- ➔ Demand appraisal done
- ➔ Ending software engineering
- ➔ Developing industrial design
- ➔ Ready to start 2nd test and validation process
- ➔ First sales expected June 2016

ASSET PROTECTION: European patent. Applied (EP14382294.8) /PCT.

INTERESTS & AGREEMENTS



- ➔ Private company
- ➔ Multidisciplinary team
- ➔ 3 universities backing the project
- ➔ Working closely with final users
- ➔ With the aim of providing real solutions

MARKET AND FINANCIAL POSITION

- The asset is being financed by the entrepreneurs and competitive public/private funding
- Started locally to be deployed globally

Further resources and collaborative agreements required for international marketing

THANK YOU!

Martha Mackay

info@care-respite.com

martha.mackay@acceplan.com

Illustrations: **Sonia Mackay**

